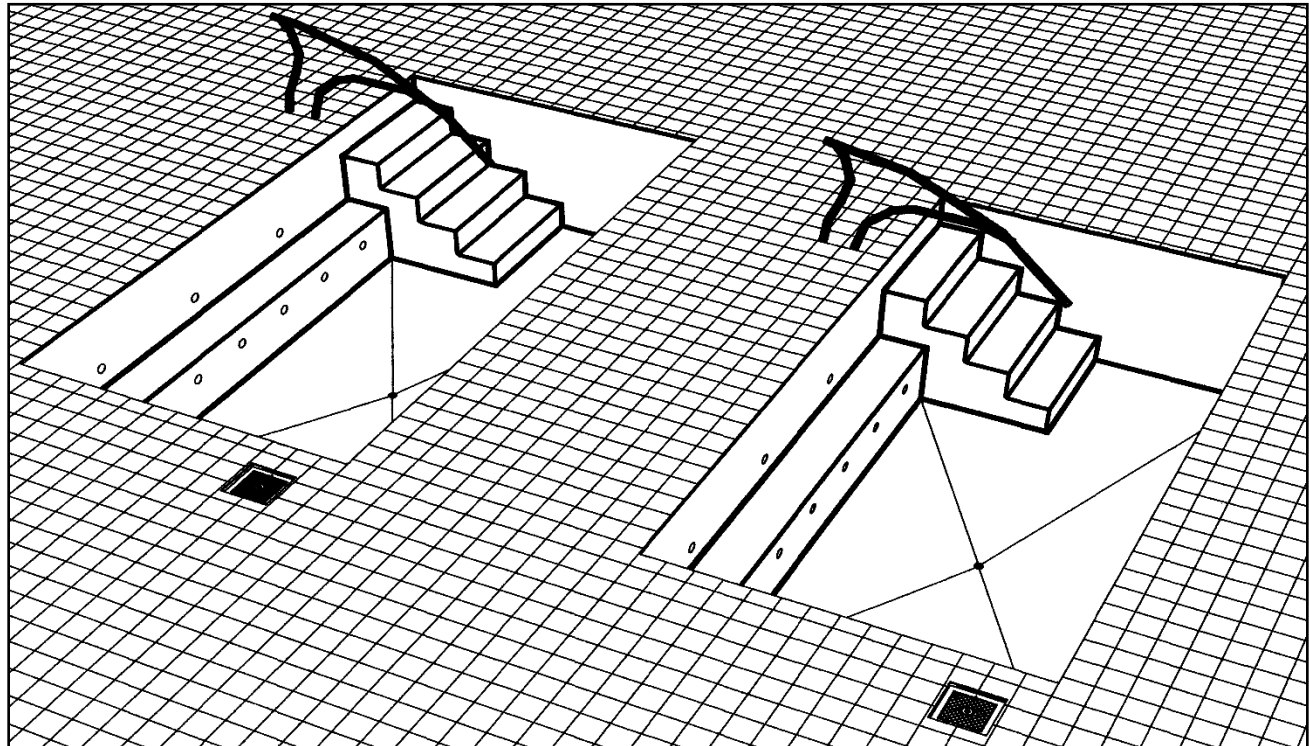


**Model 4800 Cold<sub>2</sub>Warm In-Ground Hydrotherapy System**



A versatile and efficient hydrotherapy system designed to fit customer's unique requirements. Its custom stainless steel plunge tanks offer seated over-the-waist immersion and additional room for standing. Water temperature is precisely maintained with an internal refrigeration system that reclaims heat removed from the Cold tank to heat the Cold<sub>2</sub>Warm tank. The Cold<sub>2</sub>Warm tank can also be switched to cold.

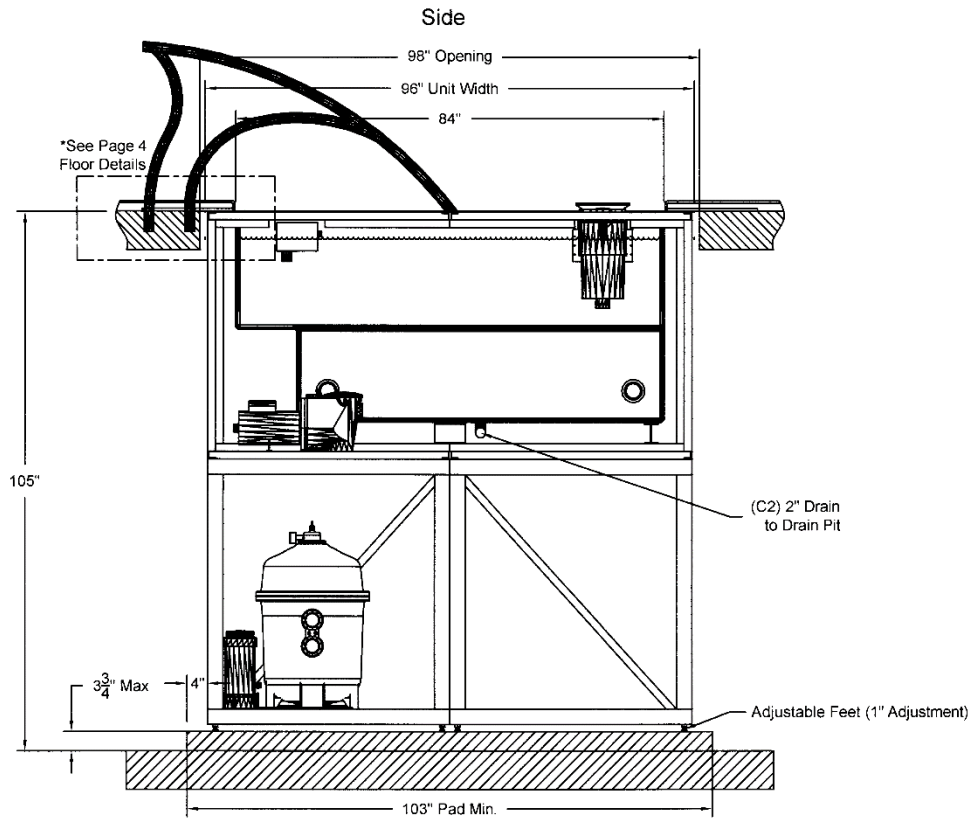
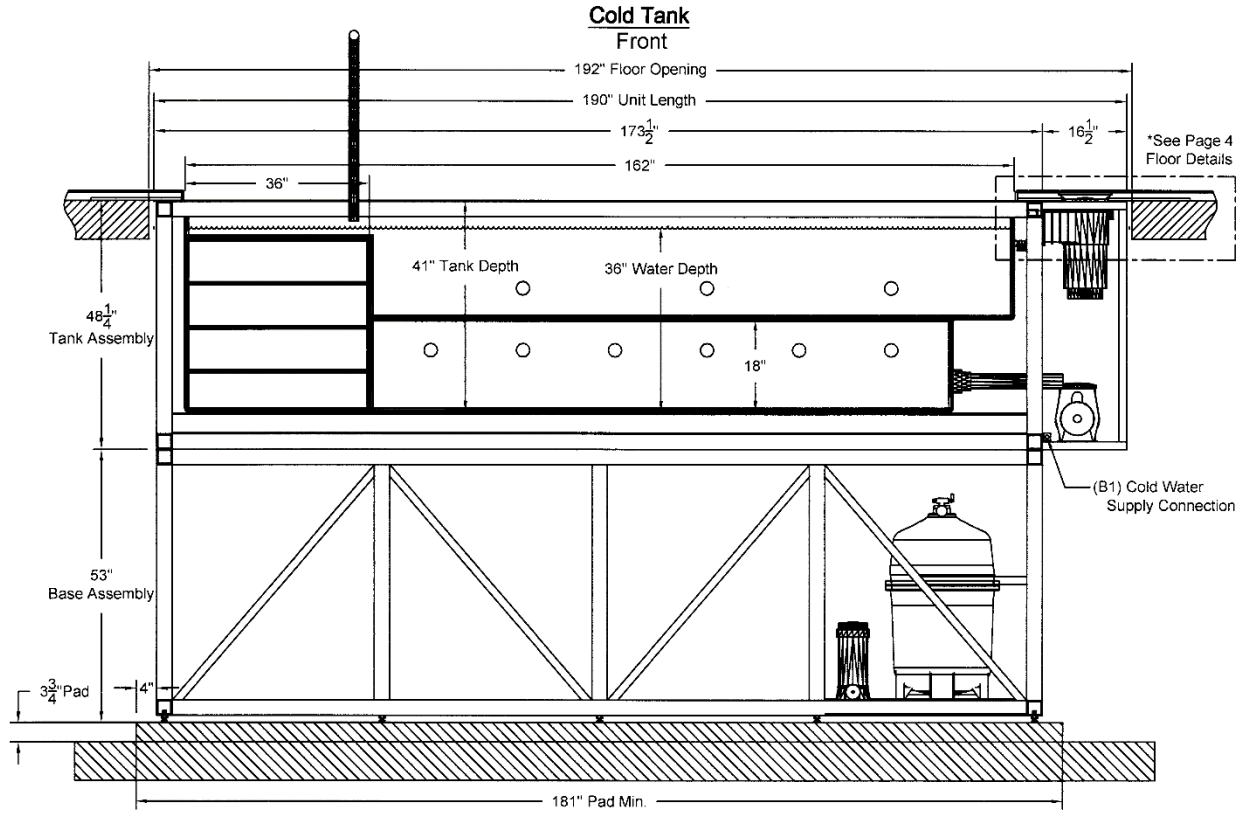
**Specifications:**

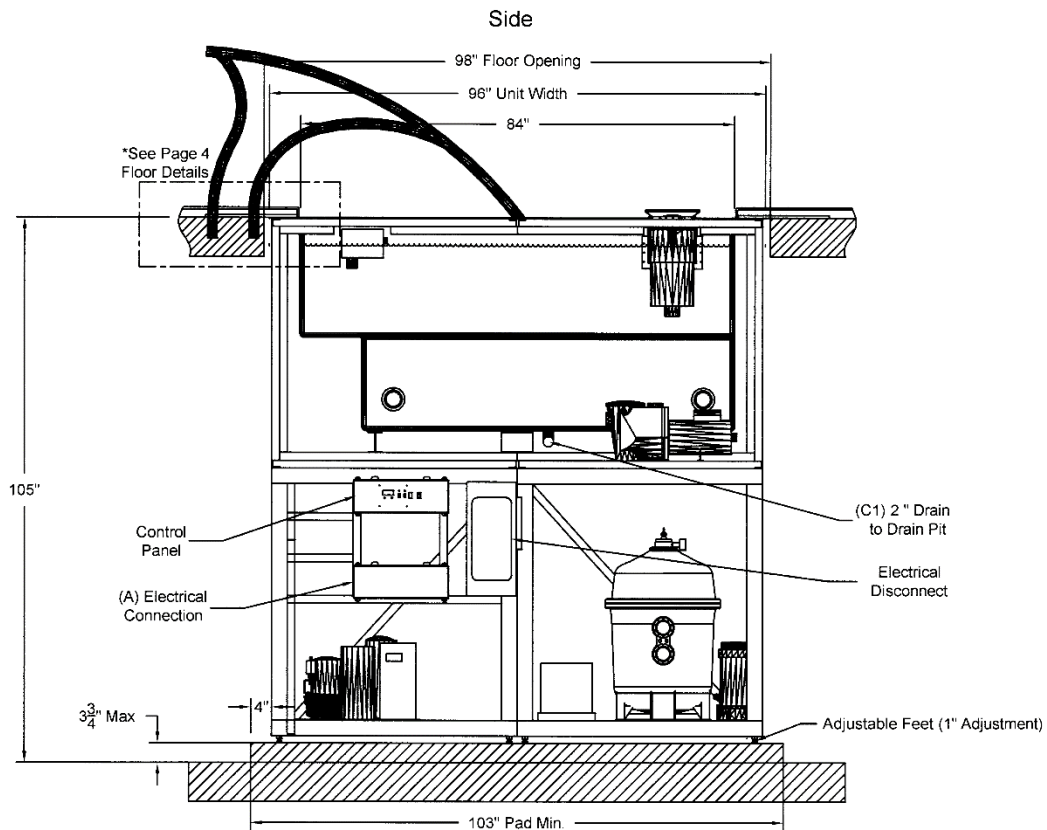
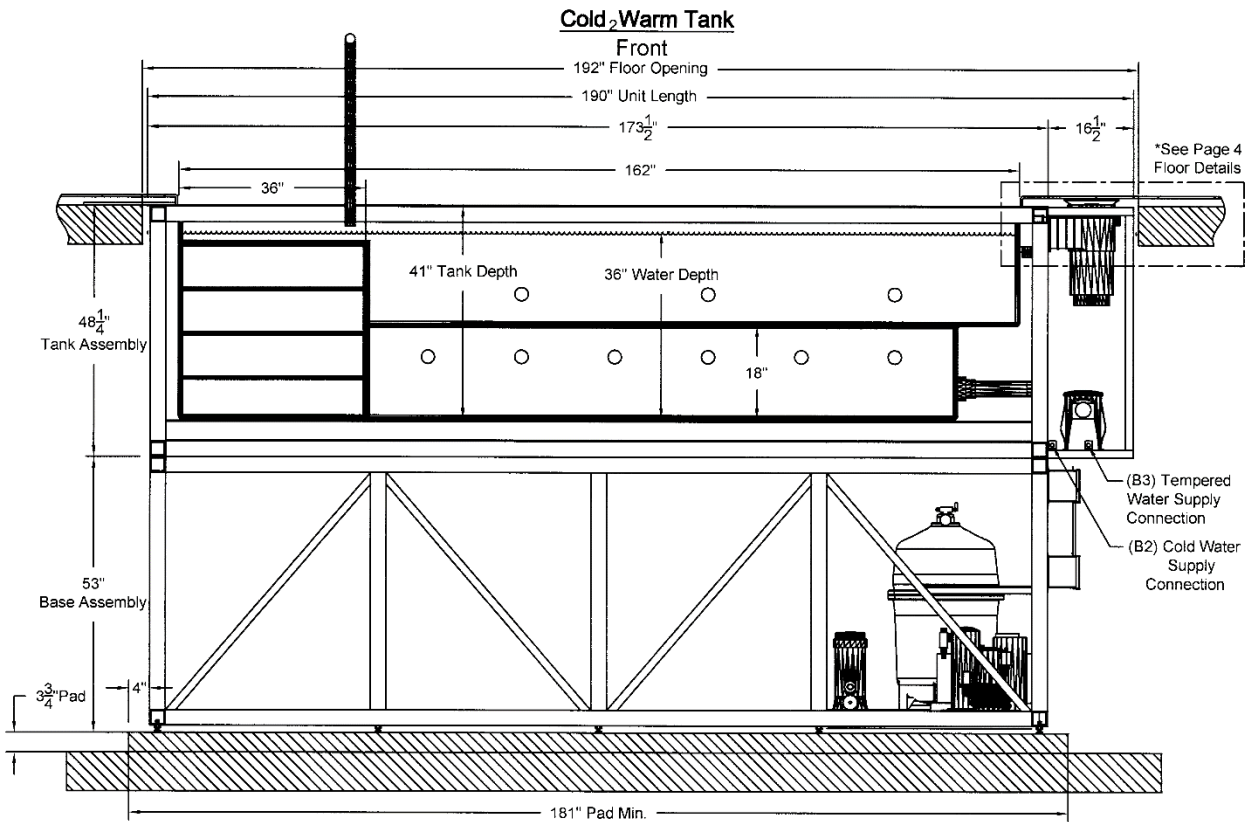
**Cold Tank**

**Cold<sub>2</sub>Warm Tank**

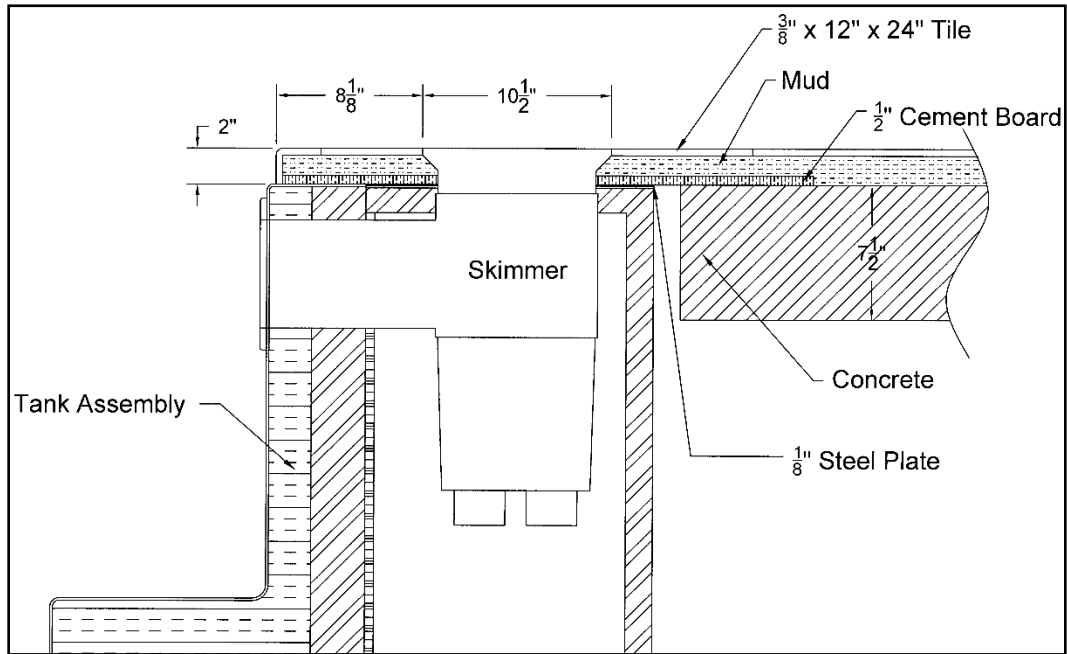
	<b>Cold Tank</b>	<b>Cold<sub>2</sub>Warm Tank</b>
Weight / Tank Empty	8,800 Pounds	9,200 Pounds
Weight / Tank Full	22,436 Pounds	22,936 Pounds
Tank Size	84" L x 162" W x 42" D	84" L x 162" W x 42" D
Tank Volume	1793 Gallons	1793 Gallons
Tank Surface Area	94.5 Square Feet	94.5 Square Feet
Tank Perimeter	41 Feet	41 Feet
Tank Construction	10 Gauge, Type 304 Stainless Steel	10 Gauge, Type 304 Stainless Steel
Frame Size	96" L x 190" W x 48"	96" L x 190" W x 48"
Water Temperature Range	40° F to 70° F	40° F to 110° F
Refrigeration System	5 HP Water Cooled	
Electrical Supply	208 Volt, 3-Phase, 60 Hertz	
Full Load Amperage	79 Amps Max	
Circuit Breaker	3 Pole, 100 Amp GFCI	
Cold Water Supplies	Pipe Size = 1" Copper PSI = 20 Min. 80 Typical	
Tempered Water Supply	Pipe Size = 1" Copper PSI = 20 Min. 80 Typical	
Gravity Drain Outlet	Pipe Size = 1-1/2" Copper Max Flow = 83 GPM	



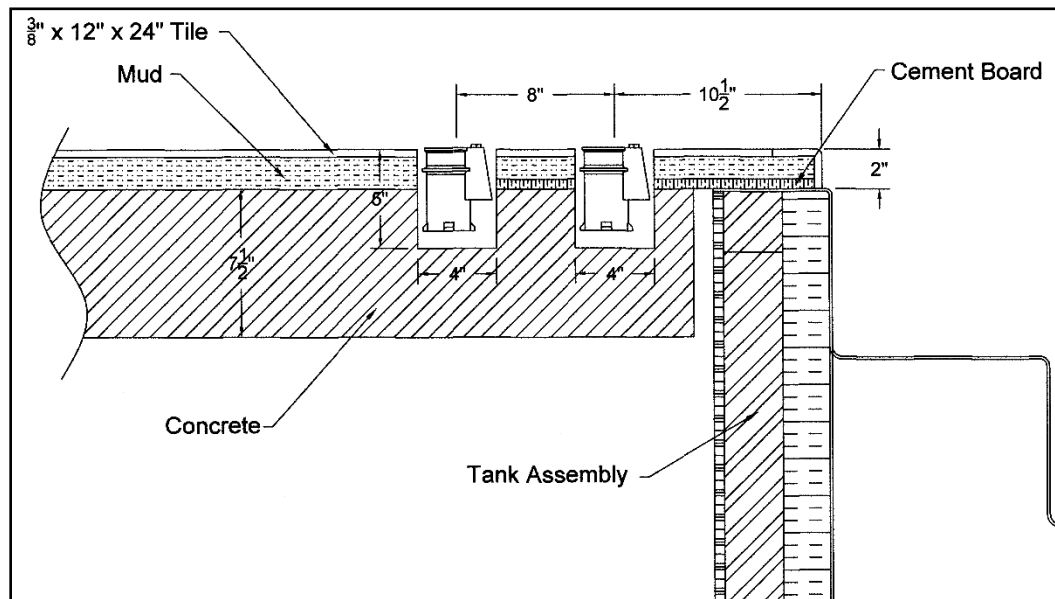




**Skimmer Floor Detail**



**Hand Rail Anchor Floor Detail**



**Specifications**

**Self-Contained System**

This Cold<sub>2</sub>Warm Hydrotherapy System is totally self-contained. The Recirculation, Drain/Fill, Refrigeration, and Electrical Systems are totally preassembled within Tank and Support Frame Assemblies.

**Stainless Steel Tanks**

Both tanks are 162” long, 84” wide, and 42” deep with a capacity of 1,793 gallons. They are formed and welded from 10-gauge Type 304 stainless steel into a seamless unit with covered corners for easy cleaning. This high-quality stainless-steel tank assures maximum sanitation and provides a lifetime of durable service.

**Heat Recovery System**

Our unique energy efficient refrigeration system warms the Cold<sub>2</sub>Warm tank with heat recovered while cooling the Cold tank. The Cold<sub>2</sub>Warm tank can also be switched from warm to cold when both tanks are needed for cryotherapy. System is charged with environmental friendly, zero ozone depletion potential, R-407A refrigerant.

**Temperature Controls**

An electronic control accurately maintains and digitally displays water temperature that is adjustable in both tanks. The Cold Tank is adjustable from 40°F to 70°F and the Cold<sub>2</sub>Warm Tank is adjustable from 40°F to 110°F. Temperature is measured and can be set to within 0.1°F. A Press-To-Set button displays the set point temperature and adjustment is made with a tamper proof screwdriver slot.

**Foamed-In-Place Insulation**

Each Tank has at least six inches of foamed-in-place polyurethane insulation surrounds and supports the tank. This exceptional insulation significantly reduces heat loss. CRYOTherm saves with energy and water savings when compared to conventional whirlpools

**Gravity Drain**

A 2” gravity drain outlet located in the center of the stainless-steel tank with creases directing water to the outlet and a hand operated ball valve that simplifies draining and cleaning.

**Water Level Control**

Both tanks have an automatic control to maintain a constant 36” deep water level. This eliminates manual filling and accidental overflows when refilling the tank.

**Recirculation Systems**

All required equipment is NSF approved and piping is potable water rated. The recirculation system includes skimmers with equalizer, 225 sq. ft. cartridge filters, 1-HP self-priming pumps with flow sensing switch and electrical interlock, VGB suction outlets, automatic chemical feed systems, design flow rate meters, pressure/ vacuum gauges, and valves for adjustment of the system.

NSF Pumps – 1 HP	Hayward HCP20103
NSF Filters – 225 Sq. Ft.	Hayward C2030
NSF Chemical Feeders	Hayward CL220 w/ Pentair R172080 Flow Meter
NSF Skimmers	Hayward SP1084FVE
NSF Flow Meters	Flow Vis FV-C-15
UL VGB 2008 Suction Outlets	Paramount SDX 005-252-2098-02
Design Flow Rate	75 GPM
Turnover in 8 Hours	36,000 Gallons
Turnover Rate	24 Minutes



**Hydrotherapy Jets**

A total of 17 jets are arranged per customers specification. Aeration to these jets is supplied by a 1.5 HP Blower Motor controlled by a wall mounted button at a field identified location.

**Installation**

Delivery, installation supervision, and field-testing are provided with the CRYOTherm 4800 Dual-Tank Hydrotherapy Console.

**A = Electrical Connection**

<b>208 Volt, 60 Hertz, Three Phase 4-Wire</b>
Rating at Full Load = 79 Amp Max
* Circuit Breaker = 3-Pole, 100 Amp, GFCI
* Disconnect Switch

(\* Supplied by Customer)

**B1 & B2 = Cold Water Supply Connections**

Pipe Size = 1" FPT Brass
Water Pressure = 80 PSI Max.
Water Temperature = 80°F Max.
* Backflow Preventer

(\* Supplied by Customer)

**B3 = Tempered Water Supply Connection**

Pipe Size = 1" FPT Brass
Water Pressure = 80 PSI Max.
Water Temperature = 100°F Max.
* Backflow Preventer

(\* Supplied by Customer)

**C1 & C2 = Drain Outlets**

Pipe Size = 1-1/2" Copper
Flow = 40 GPM Max Each
* To Drain Pit in Underground Utility Room Floor

(\* Supplied by Customer)

**One-Year Warranty**

The CRYOTherm warranty applies to purchaser and any subsequent owner. Grimm Scientific Industries, Inc. (warrantor) warrants this product to be free from defects in material and workmanship under normal use for one year from the date the product is installed. The warrantor may opt to replace the product, rather than repair it. This warranty does not cover damage resulting from accidents, improper use, or maintenance of this product, and in no case, shall the warrantor's liability exceed the original purchase price paid for the product. This warranty is expressly in lieu of all other express warranties.

**FDA Listed Medical Device**

***ETL Certified to Meet UL 1795 Standard for Safety – Hydrotherapy Bathtubs***

**Contact Us:**

Grimm Scientific Industries, Inc  
 P.O. Box 2143  
 Marietta, OH 45750  
 Phone....800-223-5395  
 Fax.....740-374-5745  
 E-mail....grimm@ee.net

